

2024

Brief Annual Report





WHO WE ARE

Korean Cancer Study Group (KCSG) is the nation’s leader in multi-institutional clinical trials for cancer treatment.

Since our establishment in 1998, KCSG has been dedicated to the advancement of clinical and translational cancer research through multi-institutional clinical trials in Korea.

VISION

Paving the Way to a Cancer-free World

GOAL

- 1 To design and conduct practice changing clinical trials
- 2 To promote international collaborative cancer research
- 3 To optimize multidisciplinary team science in cancer research
- 4 To improve public access to cancer clinical trials
- 5 To implement education and training on cancer treatments and clinical trials

WHAT WE DO



Research support for efficient implementation of multi-institutional clinical cancer studies



System and policy studies taking part in developing regulations and policies on clinical cancer research



Public relations to improve public’s understanding of clinical cancer research



Education programs to nurture specialized professionals in clinical cancer research



Domestic & international cooperation programs for cancer researchers and research institutions



Information exchange program including symposiums and conferences encouraging academic collaboration between researchers

2024 KEY FIGURES



870+
Individual Members
dedicated Cancer Research



120+
Cancer Centers &
Hospitals in Korea



280+
Clinical Research since 1998



57,000+
Enrolled Patients



160+
Publications



6+
Alliances with
Global Study Groups

RESEARCH FIELD



Hepatobiliary & Pancreatic Cancer



Breast Cancer



Lymphoma



Head & Neck and Esophageal Cancer



Lung Cancer



Palliative Care



Genitourinary Cancer



Colorectal Cancer



Rare Cancer



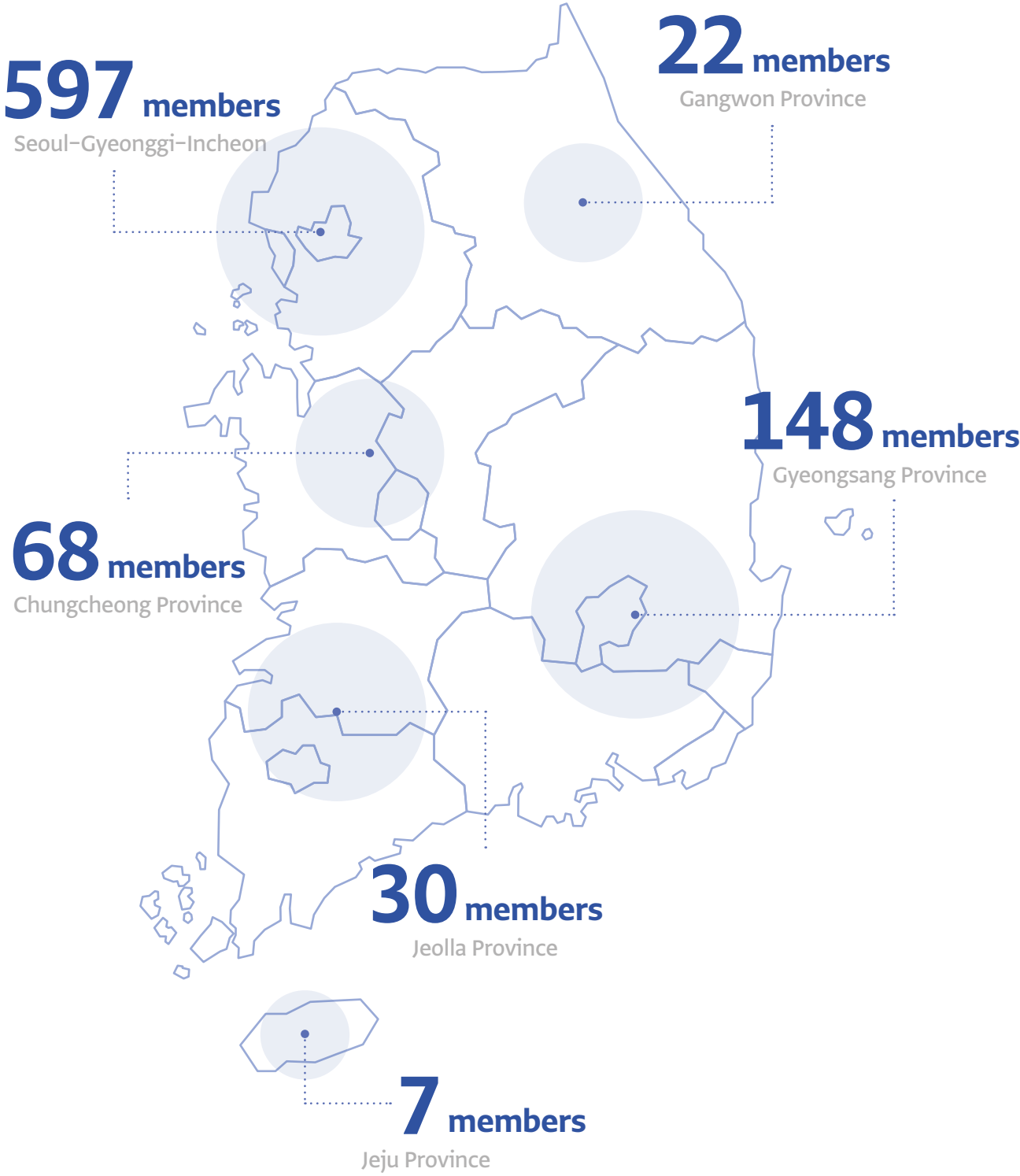
Gynecologic Cancer



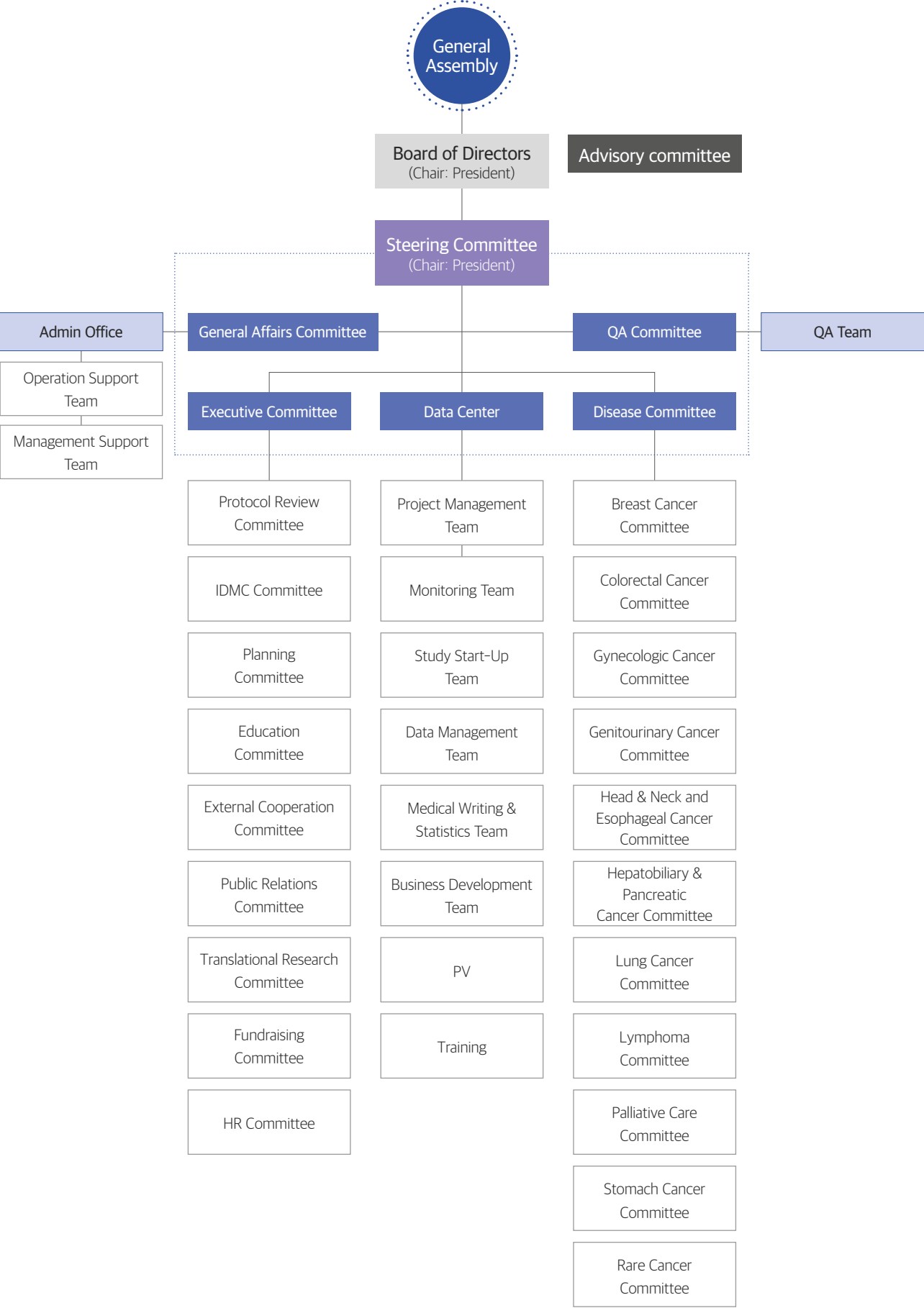
Stomach Cancer

MEMEBERSHIP

- 870+ members from 120 hospitals and institutions in Korea
- Clinical oncologists across all oncology disciplines
- Highly interconnected national network for efficient global clinical trials
- Well-trained healthcare professionals including CRAs, CRCs, CRPs, and members of CRO



ORGANIZATION



OUR HISTORY

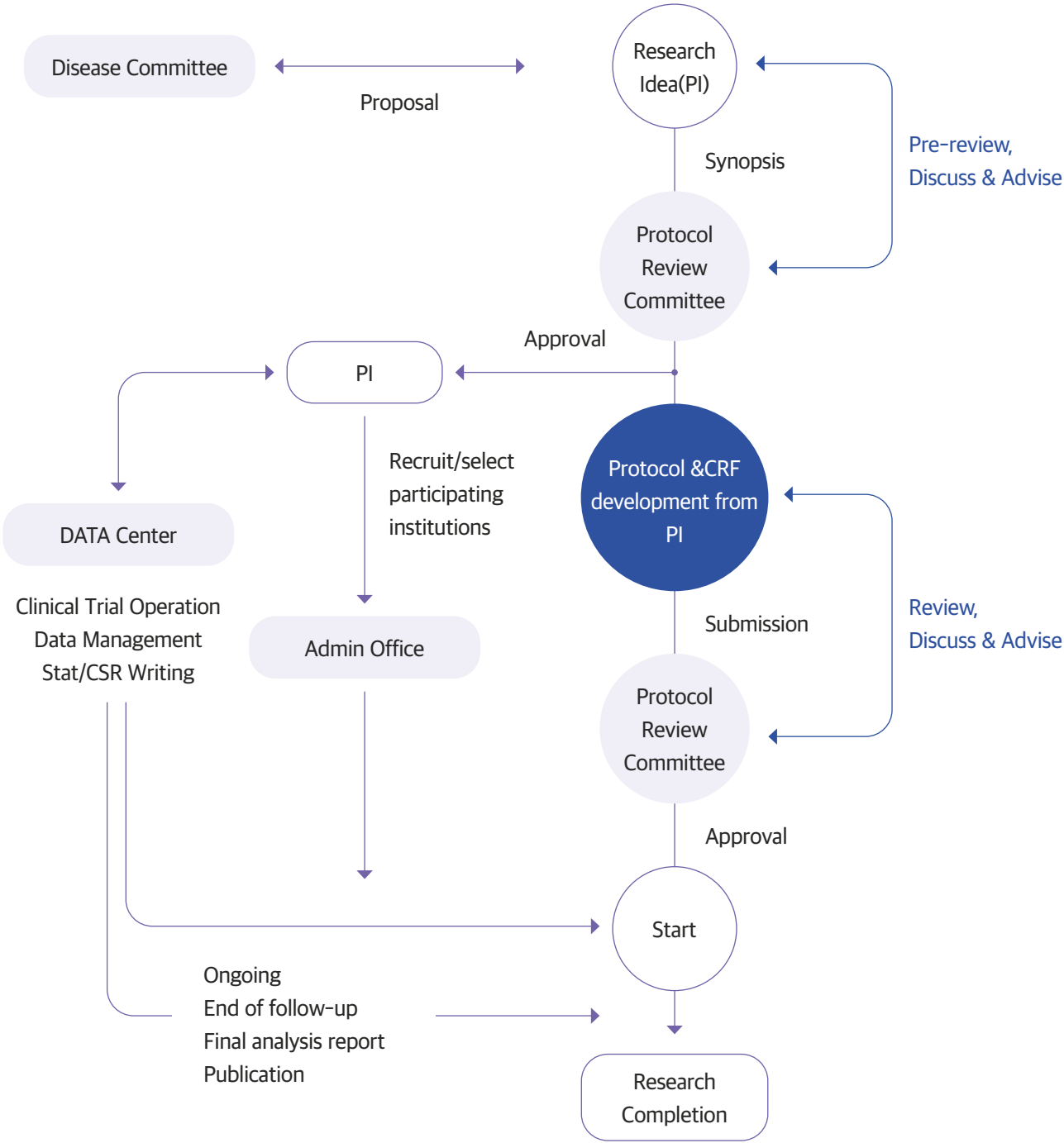
- **1998**
Established KCSG, consisting of six committees: Stomach Cancer, Colorectal Cancer, Lung Cancer, Head & Neck and Esophageal Cancer, Breast Cancer, and Lymphoma
- **2002**
Founded Hepatobiliary & Pancreatic Cancer Committee
- **2003**
Hosted the 1st Clinical Trial Workshop
- **2004**
Founded Palliative Care Committee
- **2005**
Set up Institutional Review Board (IRB)
- **2006**
Research Support Department renamed to Data Center
- **2007**
[KCSG LU02-01] research published: J Clin Oncol. 2007;25:5233-9

- **2014**
[KCSG LY04-03] research published: Oncologist, 2014;19:1129-30
Entered partnership with TRIO (Translational Research in Oncology) for joint research, received TRIO grant
Started exchange program with AGITG (Australasian Gastro-Intestinal Trials Group)
- **2013**
[KCSB BR07-02] research published: J Clin Oncol. 2013;31:1732-9
- **2011**
[KCSG HB06-02] research published: Cancer Chemother Pharmacol, 2010 Mar;65(4):641-7
[KCSG ST06-04] research published: Invest New Drugs, 2011;29:366-73
Joined ECOG as special participant member
- **2010**
Founded Protocol Review Committee (PRC)
Implemented KCSG-ECOG-ACRIN (Eastern Cooperative Oncology Group) research cooperation
- **2009**
Founded GU/GY cancer committee and rare cancer committee

- **2015**
[KCSG LU05-04] research published J Clin Oncol. 2015 Aug 20;33(24):2660-6
[KCSG GU10-17] research published Br J Cancer. 2015;112:260-5
[KCSG HN12-02] research published Clin Cancer Res. 2015 Feb;21(3):544-52
Participated in collaborative research with EORTC (European Organization for Research and Treatment for Cancer)
Participated in research of CTCG (Canadian Cancer Trials Group)
- **2016**
Endorsed by Ministry of Food and Drug Safety
- **2017**
[KCSG LU13-08] research published J Clin Oncol. 2017 Aug 10;35(23):2613-2618
Became a member of Breast International Group (BIG)
Established QA Committee and Translational Research Committee
- **2018**
[KCSG PC13-09] research published Br J Cancer. 2018 May;118(9):116901175
Hosted KCSG-KoNECT-ECRIN joint workshop

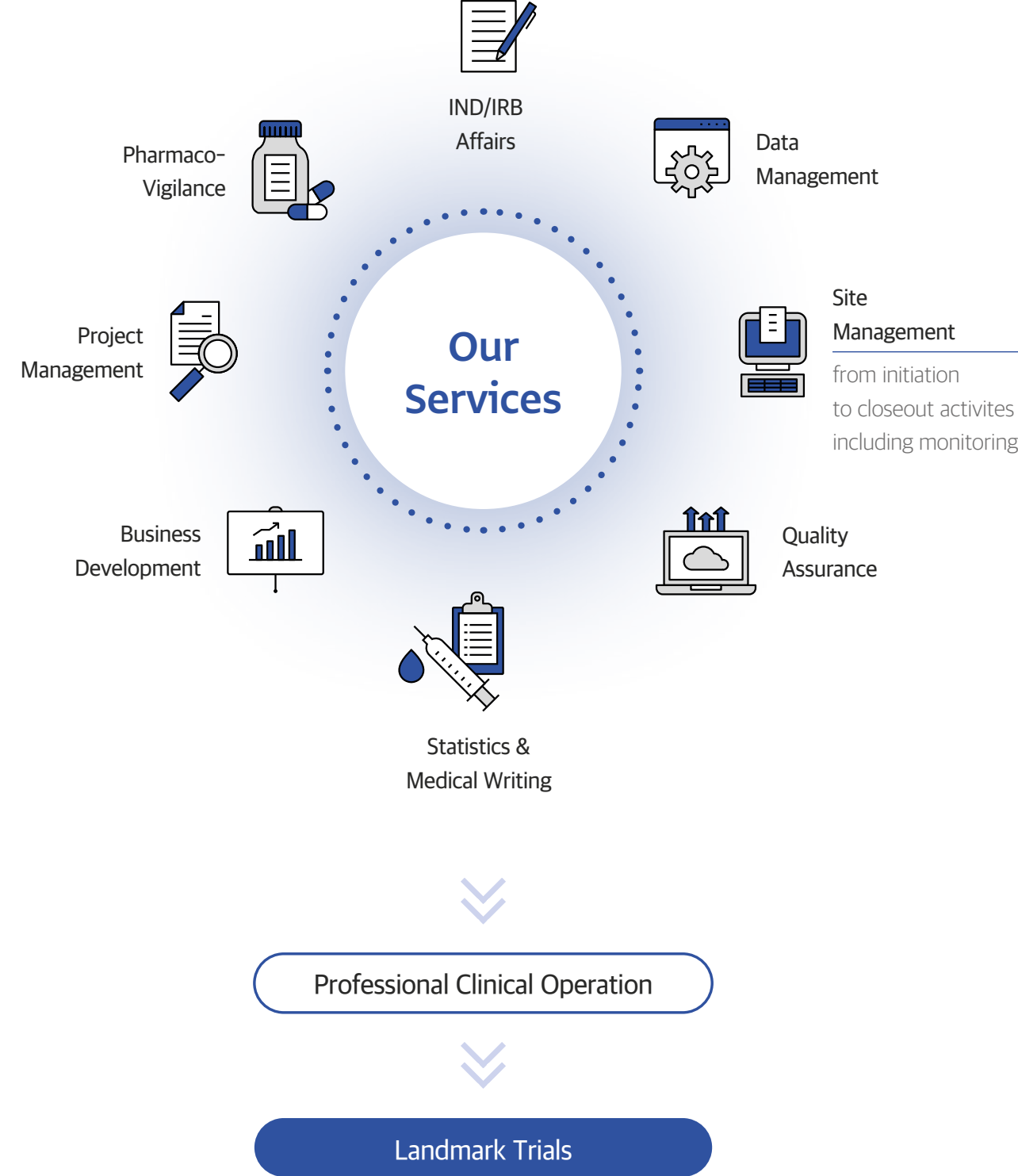
- **2024**
[KCSG LU19-04] research published J Clin Oncol. 2024 Apr 10;42(11):1241-1251.
[KCSG HN15-16] research published J Clin Oncol. 2024 Feb 10;42(5):507-517.
[KCSG HN20-08] research published Nat Med. 2024 Mar;30(3):699-707.
- **2023**
[KCSG HB19-14] research published Lancet Gastroenterol Hepatol. 2023 Jan;8(1):56-65.
- **2022**
Published 'Recommendations for the Use of Next-Generation Sequencing and the Molecular Tumor Board for Patients with Advanced Cancer'
- **2021**
Established Bio-statistics Team and Medical Writing Team
- **2020**
[KCSG LU15-09] research published J Clin Oncol. 2020 Feb 10;38(5):488-495
Opened online training program for cancer clinical trial professionals
- **2019**
Consolidated IRB Committee into PRC Committee
Hosted Clinical Trial Networking Night at ASCO 2019 (Co-host: KoNECT)

KCSG'S CLINICAL TRIAL PROCEDURE



DATA CENTER

Data Center Is a clinical operation organization in KCSG. We provide high-quality clinical operational services to study sponsors, complying with ICH guidelines, Korean GCP and relevant regulations.



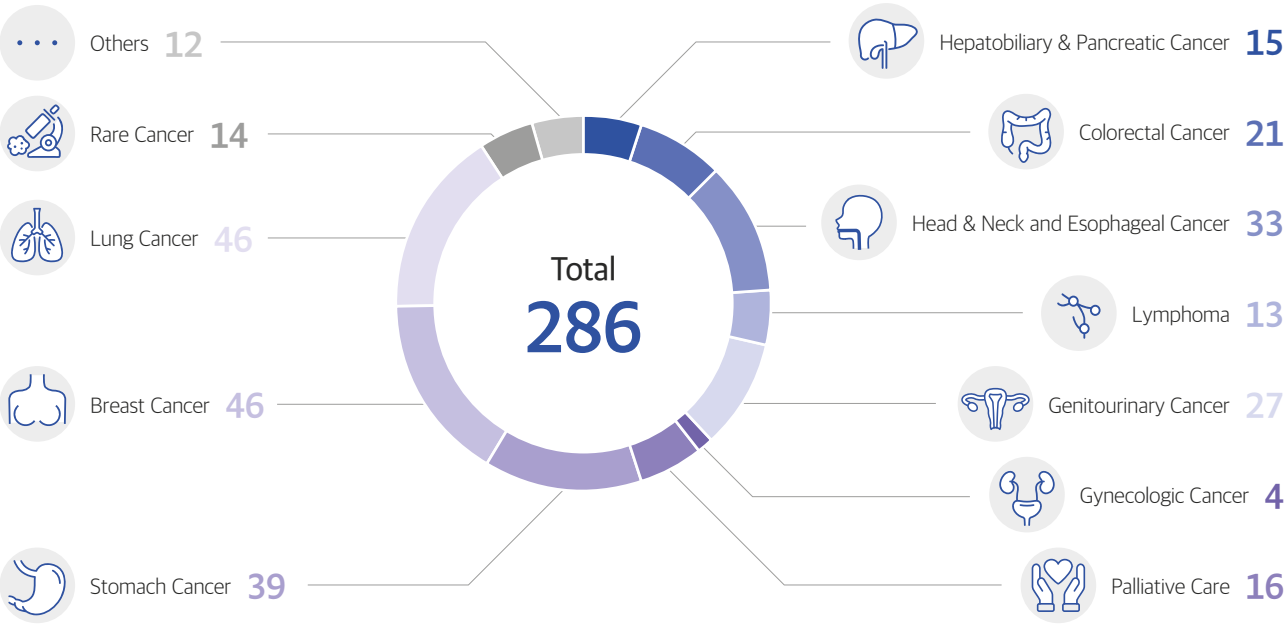
GLOBAL COOPERATIVE ACTIVITIES

Cooperative Group	Study Code	Study Title
TRIO	TRIO033	A phase III, multicenter, randomized, open-label trial to evaluate efficacy and safety of ribociclib with endocrine therapy as an adjuvant treatment in patients with hormone receptor-positive, HER2-negative, early breast cancer (New Adjuvant TriAL with Ribociclib [LEE011]: NATALEE).
TRIO	TRIO 038	A Randomized, Multicenter, Open-Label, Two-Arm, Phase II, Neoadjuvant Study Evaluating the Efficacy, Safety, and Pharmacokinetics of GDC-9545 Plus Palbociclib Compared With Anastrozole Plus Palbociclib for Postmenopausal Women With Estrogen Receptor-Positive and HER2-Negative Untreated Early Breast Cancer
TRIO	TRIO039	A Phase 1b Dose Escalation Study of BOLD-100 in Combination with FOLFOX Chemotherapy in Patients with Advanced Solid Tumours
TRIO	TRIO041	A phase III, multicenter, randomized, open-label trial to evaluate the efficacy and safety of regorafenib in combination with nivolumab versus transarterial chemoembolization (TACE) for the first-line treatment of intermediate-stage hepatocellular carcinoma with beyond up-to-7 criteria
TRIO	TRIO045	A phase III, randomized, open-label, multicenter study evaluating the efficacy and safety of adjuvant giredestrant compared with physician's choice of adjuvant endocrine monotherapy in patients with estrogen receptor-positive, HER2-negative early breast cancer
TRIO	TRIO051	A phase 1, first in human, dose-escalation study of TORL-2-307-MAB in participants with advanced cancer
TRIO	TRIO052	A phase 1, first in human, dose-escalation study of TORL-2-307-ADC in participants with advanced cancer
BIG	DECRESCENDO	De-escalation of adjuvant chemotherapy in HER2-positive, estrogen receptor-negative, node-negative early breast cancer subjects who achieved pathological complete response after neoadjuvant chemotherapy and dual HER2-blockade.

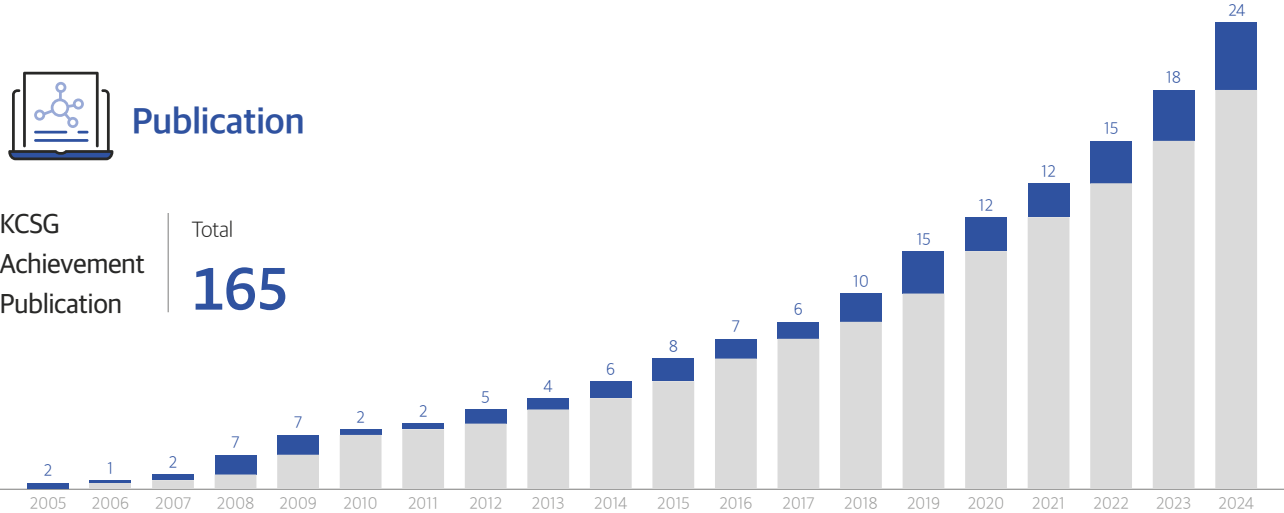


RESEARCH ACCOMPLISHMENTS

26 years of paving the way to a cancer-free world 286 clinical research since 1998



KCSG Achievement Publication Total 165



LANDMARK TRIALS



Hepatobiliary & Pancreatic Cancer

KCSG HB19-14 / Lancet Gastroenterol Hepatol. 2023 Jan;8(1):56-65.
Trastuzumab plus FOLFOX for HER2-positive biliary tract cancer refractory to gemcitabine and cisplatin: a multi-institutional phase 2 trial of the Korean Cancer Study Group (KCSG-HB19-14)



Colorectal Cancer

KCSG CO09-07 / J Clin Oncol. 2022 Jun 30;JCO2102962.
Oxaliplatin (3 months v 6 months) With 6 Months of Fluoropyrimidine as Adjuvant Therapy in Patients With Stage II/III Colon Cancer: KCSG CO09-07



Head & Neck and Esophageal Cancer

KCSG HN15-16 / J Clin Oncol. 2024 Feb 10;42(5):507-517.
Personalized Biomarker-Based Umbrella Trial for Patients With Recurrent or Metastatic Head and Neck Squamous Cell Carcinoma: KCSG HN 15-16 TRIUMPH Trial



Lymphoma

KCSG LY20-06 / Korean J Intern Med. 2023 Sep;38(5):747-757.
Treatment pattern of chronic lymphocytic leukemia/small lymphocytic lymphoma in Korea: a multicenter retrospective study (KCSG LY20-06)



Genitourinary Cancer

KCSG GU23-08 / Curr Probl Cancer. 2024 Sep 22:53:101149.
Four versus six cycles of platinum-based chemotherapy for advanced Urothelial carcinoma in the era of immune checkpoint inhibitors: A retrospective cohort study (FOCUS, KCSG-GU23-08)



Palliative Care

KCSG PC21-20 / Cancer Res Treat. 2023 Apr;55(2):442-451.
Status of Using Complementary and Alternative Medicine among Patients with Cancer in Korea: an Online Survey of Online Cancer Support Groups (KCSG PC21-20)



Stomach Cancer

KCSG ST13-10 / Cancer Res Treat. 2023 Oct;55(4):1250-1260.
A Phase 3 Randomized Clinical Trial to Compare Efficacy and Safety between Combination Therapy and Monotherapy in Elderly Patients with Advanced Gastric Cancer (KCSG ST13-10)



Breast Cancer

KCSG BR18-16 / Eur J Cancer. 2023 Dec;195:113386.
Clinical activity of nivolumab in combination with eribulin in HER2-negative metastatic breast cancer: A phase IB/II study (KCSG BR18-16)



Lung Cancer

KCSG LU20-15 / JAMA Oncol. 2024 Aug 15:e242640.
Lazertinib in EGFR-Variant Non-Small Cell Lung Cancer With CNS Failure to Prior EGFR Tyrosine Kinase Inhibitors: A Nonrandomized Controlled Trial



Lung Cancer

KCSG LU19-04 / J Clin Oncol. 2024 Apr 10;42(11):1241-1251
Phase III, Randomized Study of Atezolizumab Plus Bevacizumab and Chemotherapy in Patients With EGFR- or ALK-Mutated Non-Small-Cell Lung Cancer (ATLAS, KCSG-LU19-04)



Rare Cancer

KCSG UN18-06 / Cancer. 2024 Oct 18.
Phase 2 trial of avelumab in combination with gemcitabine in advanced leiomyosarcoma as a second-line treatment (EAGLES, Korean Cancer Study Group UN18-09)



Others

Cancer Res Treat. (Published Online Jul 10, 2024)
The Survival and Financial Benefit of Investigator-Initiated Trials Conducted by Korean Cancer Study Group



Others

KCSG AL19-17 / ESMO Open. 2024 Sep;9(9):103668.
A phase II study of tepotinib in patients with advanced solid cancers harboring MET exon 14 skipping mutations or amplification (KCSG AL19-17)

ONGOING TRIALS

Disease Committee	Phase	Study Code	Study Title
Breast Cancer	II	KCSG BR19-03	Randomized, Open label, Multi-Center, Phase II Trial of Eribulin with or without SB3 (Trastuzumab-biosimilar) in Patients With HER2-overexpressed Recurrent or Stage IV Breast Cancer Who Have Received at Least 2 Prior HER2-directed Regimens
	II	KCSG BR19-13	Single-arm Phase II Study of Palbociclib Plus Endocrine Therapy in Patients With High Risk ER-positive/HER2-negative T1-2N0-1 Early Breast Cancer Incorporating GenesWell™ BCT
	II	KCSG BR19-21	Phase II Study of Abemaciclib plus Trastuzumab biosimilar(Herzuma®) ± Fulvestrant in Patients with HER2 Positive Metastatic Breast Cancer in Brain who Progressed after HER2 directed Chemotherapy
	II	KCSG BR21-09	Randomized Phase II Study of Talazoparib Versus Talazoparib Plus Atezolizumab After Palbociclib Combination Endocrine Therapy for Patients With Premenopausal HR+/HER2- Metastatic Breast Cancer Harboring HRD Scar
	II	KCSG BR21-10	A randomized phase II clinical trial of talazoparib maintenance therapy in triple-negative breast cancer patients who showed platinum-sensitivity on first- or second-line platinum-based chemotherapy
	II	KCSG BR22-20	Comparison of clinical efficacy between letrozole + ribociclib vs. Fulvestrant + letrozole + ribociclib in Hormone receptor positive, HER2 negative metastatic breast cancer - a randomized, phase 2 study
	OS	KCSG BR22-25	Efficacy and safety of Neratinib (Nerlynx®) in HER2-positive metastatic breast cancer previously treated with 2 or more HER2-directed therapy from Expanded Access Program Cohort study
	II	KCSG BR23-18	The exploratory randomized phase II study of trastuzumab deruxtecan versus endocrine therapy of physician's choice in low-HER2 expressing hormone receptor-positive advanced breast cancer patients
	II	KCSG BR24-10	Multicenter, Open-label, Single Arm, Phase II Clinical Trial utilizing a pegylated formulation of G-CSF to mitigate neutropenia in Patients with Metastatic Triple-Negative Breast Cancer (mTNBC) receiving Sacituzumab Govitecan (SG)
Colorectal Cancer	OS/III	KCSG CO22-12	Platform Study of Circulating Tumor DNA Directed Adjuvant Chemotherapy in Colon Cancer (CLAUDIA Colon Cancer) Part 1: Prospective Observational Study of ctDNA Monitoring During Adjuvant Chemotherapy in Stage II-III Colon Cancer Part 2: A Randomized Controlled Phase III Trial of Treatment Intensification in Stage II-III Colon Cancer Patients with Positive MRD during Adjuvant Chemotherapy
	Ib&II	KCSG CO23-20	COmbination of Bevacizumab and Erlotinib Therapy in EGFR overamplified metastatic colorectal cancer with resistance or intolerance to oxaliplatin and irinotecan-based chemotherapy - A single arm, phase 2, multicenter Study (COBET)

Disease Committee	Phase	Study Code	Study Title
Colorectal Cancer	OS	KCSG CO23-21	Prevalence of microsatellite instability-high (MSI-H) or DNA mismatch repair deficiencies(dMMR) in advanced colorectal cancer in Korea
	OS	KCSG CO24-03	The role of adjuvant chemotherapy in high-risk stage II colon cancer with microsatellite instability-high (MSI-H) or DNA mismatch repair deficiencies(dMMR) : a multicenter pooled analysis
Gynecologic Cancer	I/II	KCSG GY20-10	Phase Ib/2, single arm clinical trial to evaluate the safety and activity of oregovomab and bevacizumab, paclitaxel carboplatin as a combinatorial strategy in subjects with BRCA-wild type platinum sensitive recurrent ovarian cancer
	II	KCSG GY22-08	Single-arm phase II study of bevacizumab plus modified FOLFIRINOX chemotherapy in ovarian, fallopian tube, or primary peritoneal mucinous carcinoma
Genitourinary Cancer	II	KCSG GU20-03	A Multicenter Prospective Phase II Study of modified FOLFIRINOX for 1st line treatment for advanced urachus cancer
	II	KCSG GU21-14	A Prospective Phase II Trial of Pembrolizumab Plus Lenvatinib in Advanced Adrenal Cortical Carcinoma After Failure of Platinum- and Mitotane-Based Chemotherapy (ACCOMPLISH)
	OS	KCSG GU22-13	Multicenter retrospective study of REal-world feasibility and biomarker exploration of 1st-line NivOlumab and Ipilimumab in patients with advanced renal cell carcinoma (RCC) : RENOIR study
	III	KCSG GU22-24	A randomized phase 3 trial of adding docetaxel to ADT plus ARTA in patients with metastatic hormone-sensitive prostate cancer
	II	KCSG GU23-14	A phase 2, multi-center, open-label study to evaluate the safety, tolerability and efficacy of combination regimen of GI-101A and SL-T10 in patients with metastatic castration-resistant prostate cancer (mCRPC)
	OS	KCSG GU24-04	Assessment of first-line ChemoTherapy In adVanced urothElial carcinoma a PROspective cohort, explorative analysis study (PRO-ACTIVE)
Head & Neck and Esophageal Cancer	OS	KCSG HNE20-20	Multi-center umbrella trial based on genetic analysis in rare/refractory head and neck cancer (TRIUMPH2): part 2 salivary gland cancer master protocol
	OS	KCSG HNE21-25	A Registry study of Larotrectinib chemotherapy in patients with NTRK fusion positive recurrent salivary gland cancer as second-line treatment
	II	KCSG HNE22-19	HPV 16-positive and/or HPV 18-positive recurrent and/or For patients with metastatic head and neck cancer to evaluate GX-188E DNA vaccination, GX-I7 and nivolumab combination therapy Open-label Phase 2 Clinical Trial with Lead-In Safety Cohort
	II	KCSG HNE23-06	An open label, single arm, multicenter phase II study of zanidatamab in patients with HER2 positive salivary gland carcinoma
	II	KCSG HNE24-06	An open label, multicenter Biomarker-driven Phase II Study of Combination Treatment with Darolutamide, Goserelin, and Docetaxel for Patients with Advanced Salivary Gland Cancer (SGC)

Disease Committee	Phase	Study Code	Study Title
Hepatobiliary & Pancreatic Cancer	III	KCSG HB20-14	A Randomized, Multi-center Phase III Trial of Adjuvant Chemotherapy with Gemcitabine and Capecitabine Compared to Capecitabine Alone in Curatively Resected Biliary Tract Cancer
	OS	KCSG HB23-01	A long-term follow-up study of FOLFIRINOX regimen as adjuvant therapy in pancreatic cancer patients after curative surgery: multi-center, prospective
	Ib&II	KCSG HB23-05	First-line trastuzumab, gemcitabine, cisplatin and nivolumab in advanced HER2-positive biliary tract cancer: a multicenter, openlabel, single-arm phase Ib/II trial (HERBOT)
Lung Cancer	II	KCSG LU21-17	Phase II Trial of Lazertinib and Pemetrexed/Carboplatin Combination in Patients with Epidermal Growth Factor Receptor Sensitizing Mutation Positive, Metastatic Non-Small Cell Lung Cancer with Asymptomatic or Mild Symptomatic Brain Metastases After Failure of Osimertinib
	OS	KCSG LU22-01	Lazertinib real-world observational study of in pre-treated EGFR T790M mutant with advanced non-small cell lung cancer (Lazer Sword)
	II	KCSG LU23-09	A phase II, open-label, single-arm, multi-center clinical trial of rivoceranib in patients with metastatic thymic epithelial tumor
Lymphoma	OS	KCSG LY22-15	Clinico-genetic features of Korean patients with Erdheim-Chester disease
	OS	KCSG LY24-01	A Pilot Study Evaluating the Diagnostic Accuracy of Liquid Biopsy Based on DNA Methylation in Patients with Diffuse Large B-Cell Lymphoma (DLBCL)
Palliative Care	III	KCSG PC22-11	COMparisoN of prophylactic effects for Chemotherapy Induced neutropenia between Same-day versus next-day administration of pegteograstim (Neurapeg®) in patients treated with chemotherapy regimen composed of day 1 intensive myelosuppressive agent: A randomized phase III clinical trial (CONCISE trial)
	III	KCSG PC24-09	Randomized, double-blind, placebo-controlled phase III trial of anti-inflammatory tripeptide cream for prevention of capecitabine-induced hand-foot syndrome
Rare Cancer	II	KCSG RC22-26	Randomized Phase 2 study of Adjuvant Chemotherapy vs Observation After Complete Resection of Stage III Soft Tissue Sarcomas
Stomach Cancer	III	KCSG ST15-08	A Phase 3, Open-Label, Randomized Study to Compare Adjuvant Chemotherapy of Docetaxel/Capecitabine/Oxaliplatin versus Capecitabine/Oxaliplatin in Advanced Gastric Cancer Patients at Stage IIIB and IV (M0) (Based on AJCC Ed. 6) who Received Radical Resection
	III	KCSG ST17-20	A multicenter, randomized, open label, phase III trial to evaluate the efficacy and safety of the combination of S-1, oxaliplatin and irinotecan in comparison to the combination of S-1 and cisplatin as first-line treatment in patients with metastatic or relapsed gastric cancer
	II	KCSG ST19-11	Phase 2 study of paclitaxel plus anti-EGFR as a second-line therapy for gastric and gastroesophageal junction adenocarcinomas
	III	KCSG ST21-05	A randomized phase 3 clinical trial investigating optimal duration of oxaliplatin administration in postoperative XELOX (oxaliplatin + capecitabine) adjuvant chemotherapy for the patients with stage II/III gastric cancer
	II	KCSG ST21-12	Vactosertib in combination with durvalumab (MEDI4736) in patients with gastric cancer

Disease Committee	Phase	Study Code	Study Title
Stomach Cancer	Ib&II	KCSG ST21-22	A phase 1b/2 study of tepotinib in combination with paclitaxel in patients with MET amplified or MET exon 14 altered advanced gastric and gastroesophageal junction carcinoma
	II	KCSG ST21-28	A phase II study of rivoceranib in combination with paclitaxel in patients with advanced gastric and gastroesophageal junction carcinoma
	III	KCSG ST22-03	Randomized Controlled Trial of Intravenous Ferric Carboxymaltose for Iron-Deficiency Anemia in Patients With Advanced Gastric Cancer Receiving Palliative Chemotherapy
	Ib&II	KCSG ST22-22	Phase 1b/2 trial for CKD-702 in combination with irinotecan as a third-line therapy for gastric cancer with MET or EGFR protein overexpression
	Ib&II	KCSG ST23-03	A phase 1B/2 study of TRastuzumab, bEvAciZUmab with paclitaxel for HER2-positive gasTRic canCEr in a second-line therapy (TREAZURE)
	OS	KCSG ST23-07	Multicenter cohort study to evaluate the real word efficacy and safety of chemotherapy plus nivolumab in advanced gastric cancer
	Ib&II	KCSG ST23-16	An open label, single-arm, multicenter phase Ib/II study to evaluate the safety and efficacy of T-DXd in combination with ramucirumab in patients with HER2 low gastric or gastroesophageal junction (GEJ) adenocarcinoma
	Ib&II	KCSG ST24-02	An Open Label, Single-Arm, Multi-center Phase Ib/II Study to Evaluate the Efficacy of Paclitaxel in Combination with Pembrolizumab and Olaparib as a Second Line Treatment in Immune Checkpoint Inhibitor-experienced Recurrent/Advanced Gastric and Gastro-esophageal Junction(GEJ) Cancer.
Others	OS	KCSG ST24-08	A multi-center cohort study to evaluate the real-world efficacy and safety of trastuzumab-deruxtecan in advanced gastric cancer
	OS	KCSG AL21-13	Establishment of a geriatric assessment based multidisciplinary team approach on hospitalized older patients with advanced solid cancer: a multicenter randomized clinical trial
	OS/II	KCSG AL22-09	KOrean Precision Medicine Networking Group Study of MOlecular profiling guided therapy based on genomic alterations in advanced Solid tumors (KOSMOS) II
	III	KCSG AL22-17	Prospective, multicenter, randomized phase 3 trial of high dose IV iron in combination of erythrocytosis stimulating agents in chemotherapy induced anemia with functional iron deficiency
	II	KCSG AL22-27	A phase II, open-label study of dabrafenib plus trametinib in patients with advanced solid tumor having BRAF V600E mutation or clinically actionable BRAF gene alterations
	II	KCSG AL23-02	A phase II study of ABN401 in advanced solid tumors with c-MET gene aberration (Part of KOrean Precision Medicine Networking Group Study of MOlecular profiling guided therapy based on genomic alterations in advanced Solid tumors [KOSMOS]-II)
	II	KCSG AL23-12	A phase 2 basket trial in which patients with advanced solid tumors carrying the KRAS G12C mUtation receive treatment with a combination of Sotorasib and panitumumab (KRAUS)
	II	KCSG AL23-17	Genome-Based Assessment of Niraparib (ZEJULA®) Efficacy in Advanced Solid TumorS with Homologous Recombination Deficiency (GAUSS)
Others	OS	KCSG AL23-19	Development of systems for monitoring and management of immune-related adverse events in solid cancer patients treated with immuno-oncology

PUBLICATION IN 2024

Hepatobiliary & Pancreatic Cancer Committee

KCSG HB20-08 • PMID: 38374347
Regorafenib plus nivolumab in unresectable hepatocellular carcinoma: the phase 2 RENOBATE trial
Nat Med. 2024 Mar;30(3):699-707.

Head & Neck and Esophageal Cancer Committee

KCSG HN15-16 • PMID: 37699162
Personalized Biomarker-Based Umbrella Trial for Patients With Recurrent or Metastatic Head and Neck Squamous Cell Carcinoma: KCSG HN 15-16 TRIUMPH Trial
J Clin Oncol. 2024 Feb 10;42(5):507-517.

KCSG HN15-16 • PMID: 37475136
A Phase II Trial of Nintedanib in Patients with Metastatic or Recurrent Head and Neck Squamous Cell Carcinoma: In-Depth Analysis of Nintedanib Arm from the KCSG HN 15-16 TRIUMPH Trial
Cancer Res Treat. 2024 Jan;56(1):37-47.

HN16-08/HN14-01 • PMID: 38637966
Analysis of Response and Progression Patterns of Tyrosine Kinase Inhibitors in Recurrent or Metastatic Adenoid Cystic Carcinoma: A Post Hoc Analysis of Two KCSG Phase II Trials
Cancer Res Treat. 2024 Apr 15.

KCSG HN18-08 • PMID: 37246414
A phase 2 multicenter study of docetaxel-PM and trastuzumab-pkrb combination therapy in recurrent or metastatic salivary gland carcinomas
Cancer. 2023 Oct 1;129(19):2966-2974.

KCSG HN18-17 • PMID: 38919826
A phase 2 study of spartalizumab (PDR001) among patients with recurrent or metastatic esophageal squamous cell carcinoma (KCSG HN18-17, K-MASTER project 12)
Oncoimmunology. 2024 Jun 24;13(1):2371563.

Genitourinary Cancer Committee

KCSG GU23-08 • PMID: 39312854
Four versus six cycles of platinum-based chemotherapy for advancedUrothelial carcinoma in the era of immune checkpoint inhibitors: A retrospective cohort study (FOCUS, KCSG-GU23-08)
Curr Probl Cancer. 2024 Sep 22:53:101149. Online ahead of print.

Palliative Care Committee

KCSG PC20-12 • PMID: 39028339
Efficacy of transdermal buprenorphine patch for managing withdrawal symptoms in patients with cancer physically dependent on prescription opioids
Oncologist. 2024 Nov 4;29(11):e1593-e1603.

KCSG PC21-07 • PMID: 38530439
Clinical implication of megestrol acetate in metastatic gastric cancer: a big data analysis from Health Insurance Review and Assessment (HIRA) database
Support Care Cancer. 2024 Mar 26;32(4):249.

Stomach Cancer Committee

KCSG ST22-06 • PMID: 38395832
Real-world outcomes of third-line immune checkpoint inhibitors versus irinotecan-based chemotherapy in patients with advanced gastric cancer: a Korean, multicenter study (KCSG ST22-06)
BMC Cancer. 2024 Feb 23;24(1):252..

Breast Cancer Committee

KCSG BR15-17 • PMID: 38104354
Pemetrexed plus vinorelbine versus vinorelbine monotherapy in patients with metastatic breast cancer (KCSG-BR15-17): A randomized, open-label, multicenter, phase II trial
Eur J Cancer. 2024 Jan;197:113456.

KCSG BR18-16 • PMID: 37890351
Clinical activity of nivolumab in combination with eribulin in HER2-negative metastatic breast cancer: A phase IB/II study (KCSG BR18-16)
Eur J Cancer. 2023 Dec;195:113386

KCSG BR18-16 • PMID: 39105849
Genomic and transcriptomic profiles associated with response to eribulin and nivolumab combination in HER-2-negative metastatic breast cancer
Cancer Immunol Immunother. 2024 Aug 6;73(10):197.

KCSG BR19-15 • PMID: 38288157
A nationwide real-world study for evaluation of effectiveness and safety of T-DM1 in patients with HER2-positive metastatic breast cancer in Korea (KCSG BR19-15)
Ther Adv Med Oncol 2024, Vol. 16: 1-15.

Lung Cancer Committee

KCSG LU17-19 • PMID: 38986212
A phase II study of osimertinib in patients with NSCLC harboring EGFR exon 20 insertion: A multicenter trial of the Korean Cancer Study Group
Lung Cancer. 2024 Aug;194:107870.

KCSG LU19-04 • PMID: 37861993
Phase III, Randomized Study of Atezolizumab Plus Bevacizumab and Chemotherapy in Patients With EGFR- or ALK-Mutated Non-Small-Cell Lung Cancer (ATLAS, KCSG-LU19-04)
J Clin Oncol. 2024 Apr 10;42(11):1241-1251

KCSG LU20-15 • PMID: 39145962
Lazertinib in EGFR-Variant Non-Small Cell Lung Cancer With CNS Failure to Prior EGFR Tyrosine Kinase Inhibitors: A Nonrandomized Controlled Trial
JAMA Oncol. 2024 Oct 1;10(10):1342-1351.

Rare Cancer Committee

KCSG UN14-13 • PMID: 37741071
A phase II study on the efficacy of regorafenib in treating patients with c-KIT-mutated metastatic malignant melanoma that progressed after previous treatment (KCSG-UN-14-13)
Eur J Cancer. 2023 Nov;193:113312.

KCSG UN18-06 • PMID: 39422602
Phase 2 trial of avelumab in combination with gemcitabine in advanced leiomyosarcoma as a second-line treatment (EAGLES, Korean Cancer Study Group UN18-09)
Cancer. 2024 Oct 18. Online ahead of print.

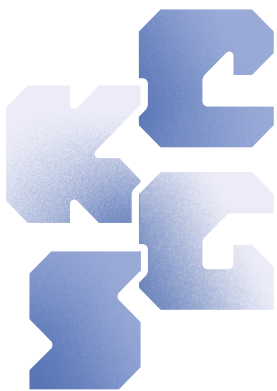
Others

KCSG AL19-17 • PMID: 39214049
A phase II study of tepotinib in patients with advanced solid cancers harboring MET exon 14 skipping mutations or amplification (KCSG AL19-17)
ESMO Open. 2024 Sep;9(9):103668.

KCSG AL22-09 • PMID: 38724991
Pragmatic nationwide master observational trial based on genomic alterations in advanced solid tumors: KOREAN Precision Medicine Networking Group Study of MOlecular profiling guided therapy based on genomic alterations in advanced Solid tumors (KOSMOS)-II study protocol KCSG AL-22-09
BMC Cancer. 2024 May 9;24(1):574

PMID: 38726510
Precision Oncology Clinical Trials: A Systematic Review of Phase II Clinical Trials with Biomarker-Driven, Adaptive Design
Cancer Res Treat. 2024 May 7. Online ahead of print

PMID: 38993093
The Survival and Financial Benefit of Investigator-Initiated Trials Conducted by Korean Cancer Study Group
Cancer Res Treat. 2024 Jul 10. Online ahead of print.





Paving the way to a cancer-free world

Contact Info

E-mail [Office] kcsk@kcsk.org [Data Center] datacenter@kcsk.org

Website www.kcsk.org

Address #1501, 49, Achaasan-ro, Seongdong-gu, Seoul 04790, Rep. of KOREA